



Instruction for Use

GL DNA Marker 100 Ladder

AG11910

Version.V2E1

**Research Use Only
Not For Diagnosis Procedures**

1. Description

This product is ready to be used for Electrophoresis with premixed loading buffer and Electrophoresis indication dyes (Xylene Cyanol and Bromophenol Blue).

2. Kit Information

Kit Name	Cat. No	Specification
GL DNA Marker 100 Ladder	AG11910	500 µl (100 lanes)

3. Transportation and Storage

Storage	Store at -20°C before use, Valid for 24 months Store at 4°C after first use, Avoid frequent freeze-thaw
Transportation	Transport at -20°C Dry Ice or Blue Ice Condition

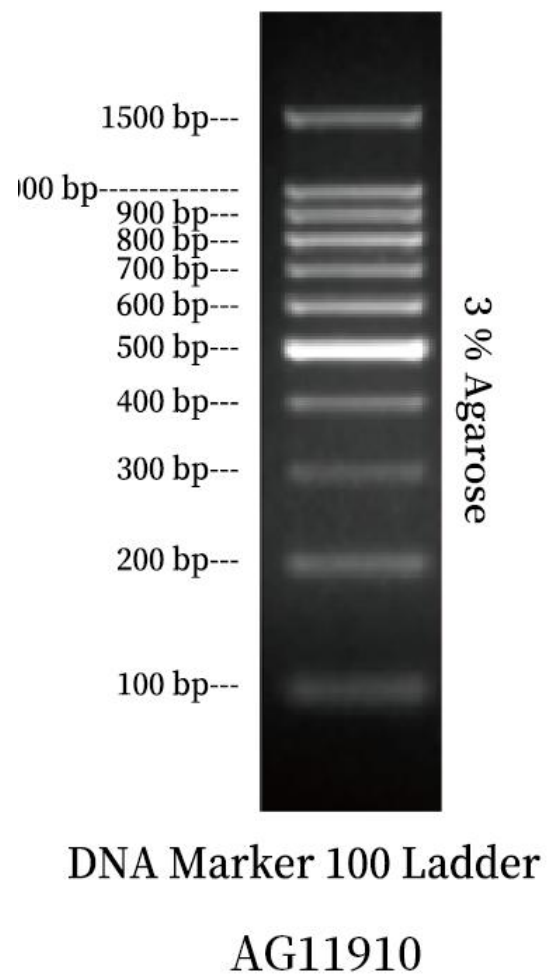
4. Product Properties

GL DNA Marker 100 Ladder	500 µl (100 lanes)
--------------------------	--------------------

5. Protocol

Use 5 µl per lane for electrophoresis.

Appendix. Table of Marker Electrophoresis Chart and Mass Information





Accurate Biotechnology (Hunan) Co., Ltd

Hunan Inspection Industrial Park, Bachelor Road,
Yuelu District, Changsha City, Hunan Province, China

service@agbio.com.cn

+86 400 767 6022

en.agbio.com.cn

Research Use Only